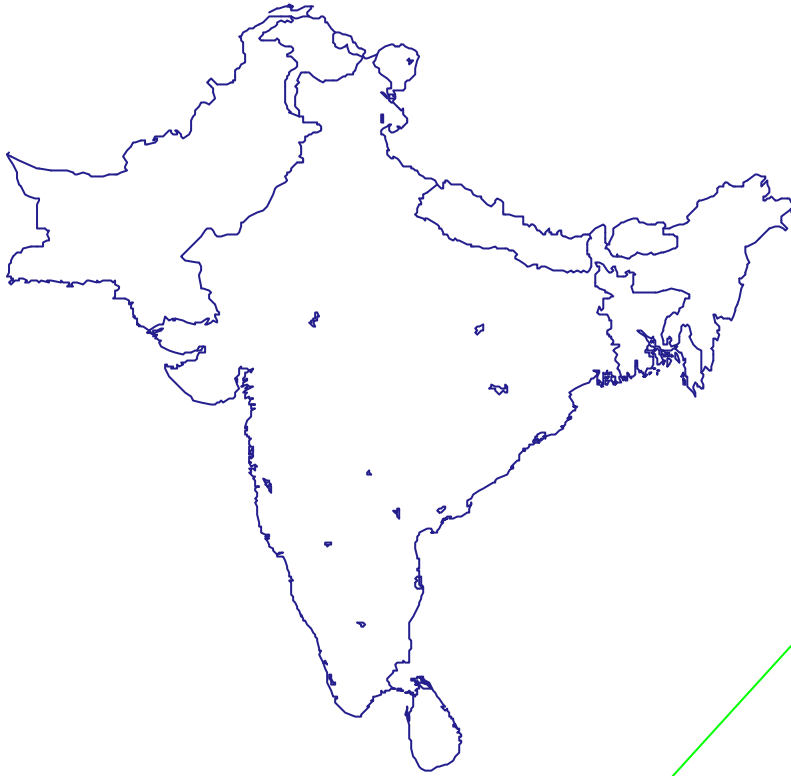
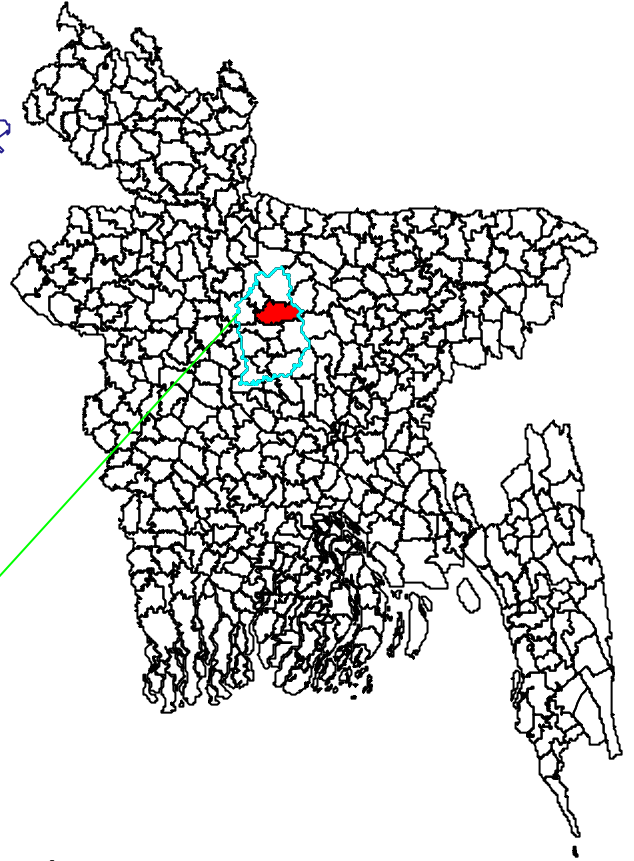


Map 1: Location of Study Area

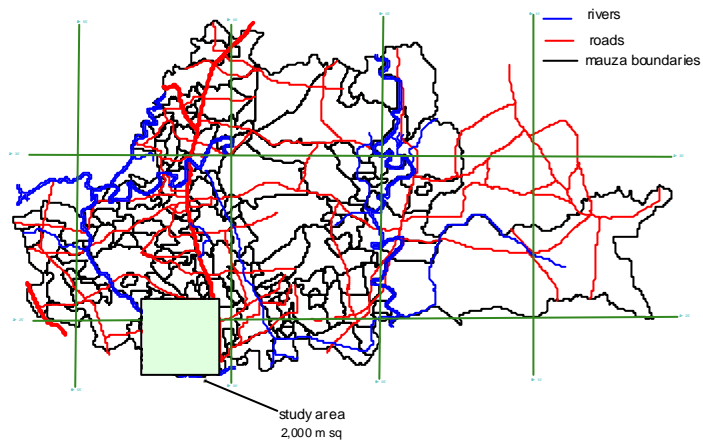
South Asia



Bangladesh

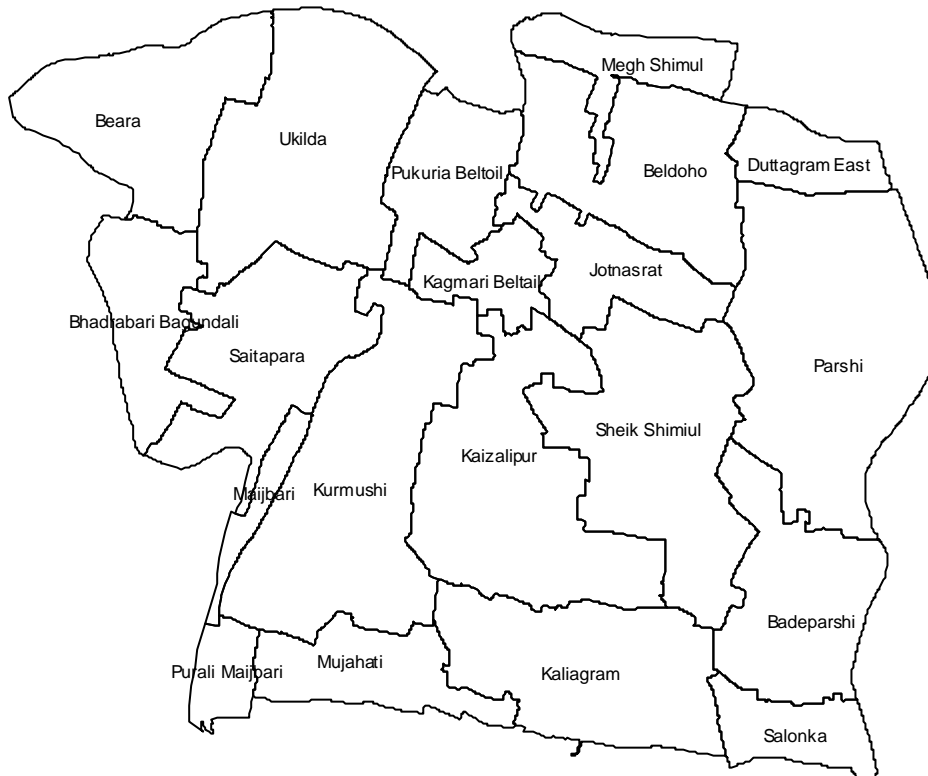


Ghatail Thana, Tangail District



Map 2: Study Area Mauza and Plots

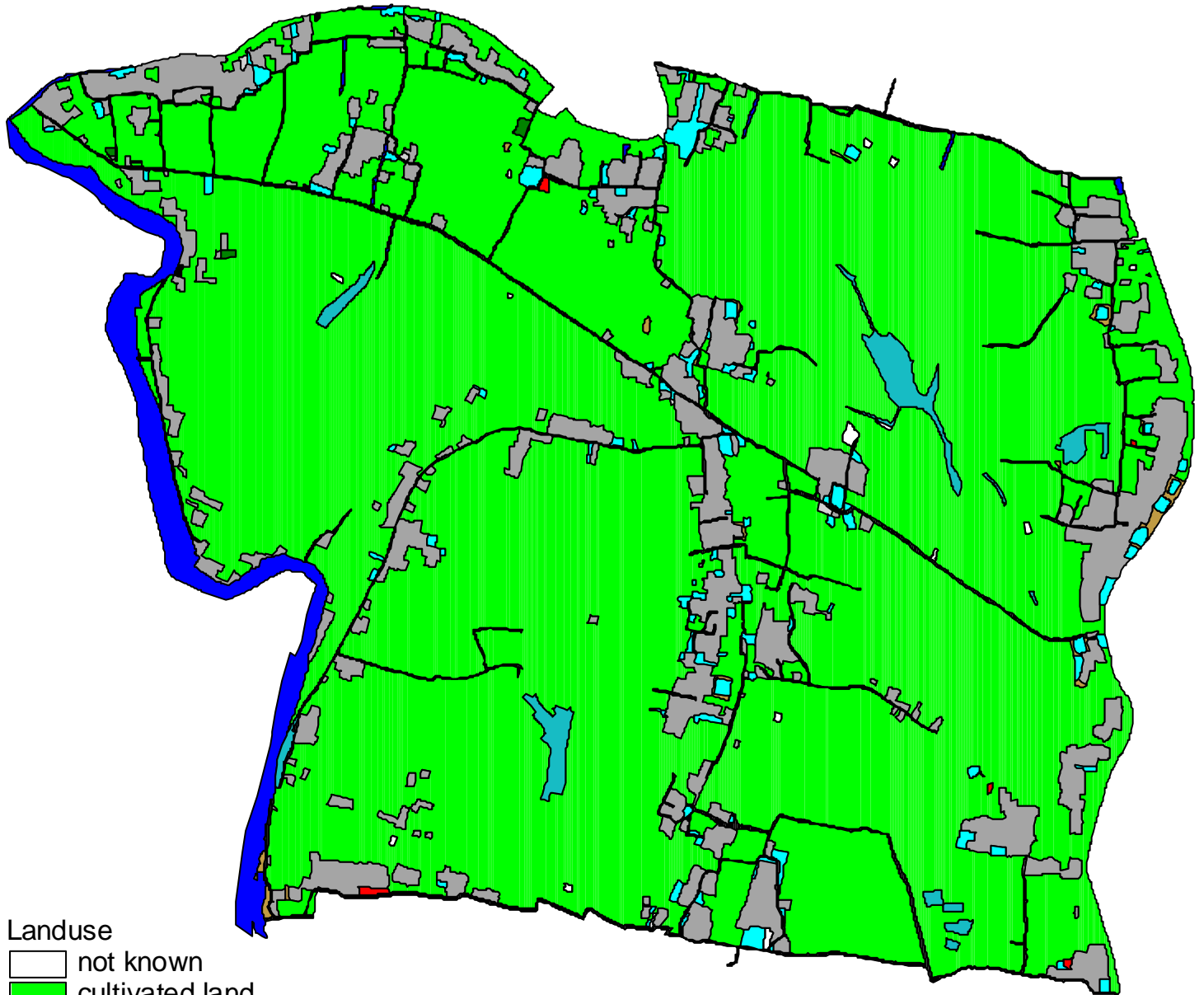
Mauza (Revenue Villages)



Cadastral Plots



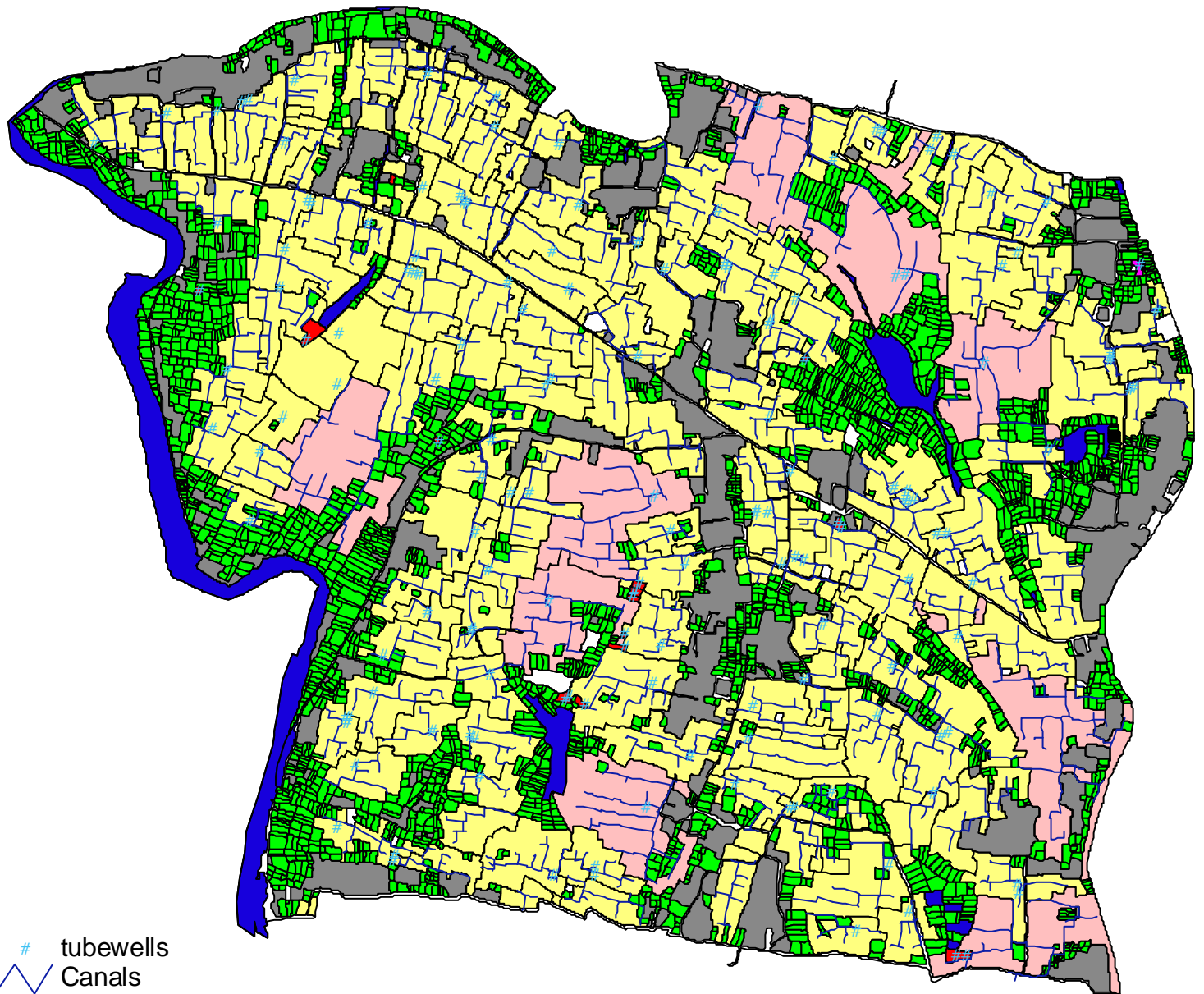
Map 3 Landuse 1995



Landuse

-  not known
-  cultivated land
-  house plots
-  ponds
-  graveyard
-  orchard
-  road
-  bheels
-  khals
-  school
-  fallow

Map 4 Land Use Winter 1995

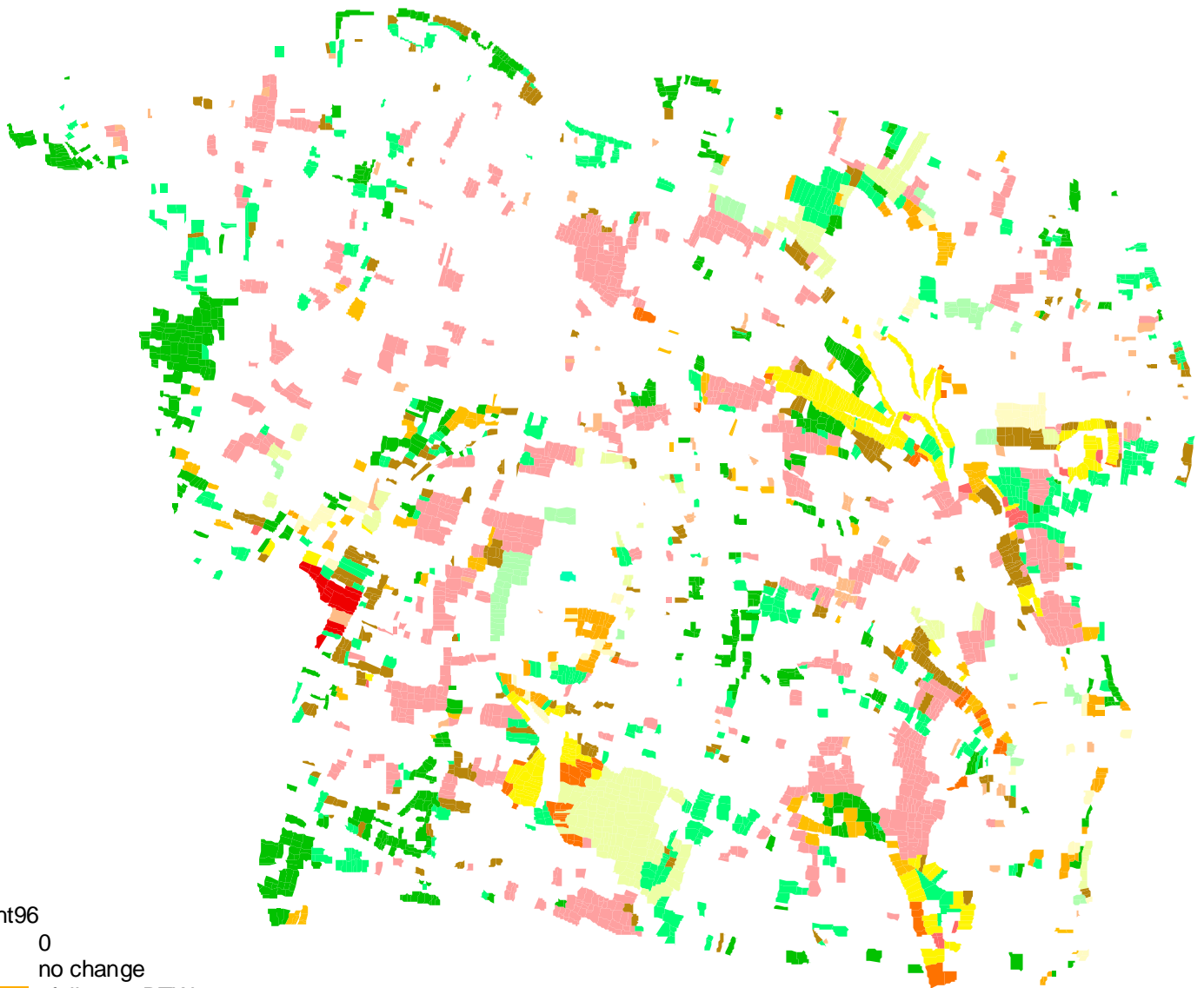


- # tubewells
- Canals
- rabi crops (ni)
- Irrigation Schemes 1995
- not known
- Deep TubeWell
- Shallow TubeWell
- Treadle pump
- Hand TubeWell
- Roads
- Water bodies
- House plots

0.5 0 0.5 1 1.5 Kilometers



Map 5: Changes in Irrigation Status, 1995-6 Rabi Seasons



Ght96

- 0 no change
- 2 fallow to DTW
- 3 fallow to STW
- fallow to LLP
- 5 fallow to manual irrig
- fallow to unirrigrabi
- 7 DTW to DTW
- DTW to STW
- 9 STW to DTW
- STW to STW
- 11 mech irrig 95 to manual 96
- mech irrig 95 to unirrigrabi 96
- 13 unirrigrabi 95 to DTW 96
- 14 unirrigrabi 95 to STW 96
- unirrigrabi 95 to LLP 96
- unirrigrabi 95 to manual 96
- unirrigrabi 95 to unirrigrabi 96
- 18 unirrigrabi 95 to fallow 96
- 19 mech irrig 95 to fallow 96

